

Item No.: _____

Project: _____

Quantity: _____

Retarder Proofer — Two Door, Condenser Included

Series LRPR2N-HO-C



LRPR2N-30HO-C (Rack not included)



Short Bid Specification:

Proofer Retarder shall be an **LBC Bakery Equipment Model LRPR2N-__HO-C** (insert 30, 40, 50, 60, 70, or 80 to indicate desired depth). Appliance shall be a double-wide roll-in rack unit, electrically heated (5 to 6.6 kW) with double doors, a quick response air-wash heat and humidity system, high output refrigeration system that includes the solenoid valve(s), expansion valve(s), line dryer(s) and epoxy coated evaporator coils, and modular foam-insulated panel construction. Interior shall be 300 series stainless steel with perimeter bumpers to protect door and walls. Doors shall have a magnetic seal, automatic closers and a full-width protective bar handles. Computerized control shall be door mounted at eye-level with accurate LED displays for Time, Temperature and Humidity. Complete appliance shall have all features listed and, if selected, optional 300-series stainless steel floor and/or 72610-48 water filtration system. **Pre-charged refrigeration shall be optional.**

Standard Product Warranty:

One Year Parts and Labor (Contiguous US, Alaska, Hawaii & Canada)

Rack Capacity:

Model	Side Load	End Load	Double
LRPR2N-30HO-C	1	2	N/A
LRPR2N-40HO-C	3	2	1
LRPR2N-50HO-C	3	3	1
LRPR2N-60HO-C	4	4	1
LRPR2N-70HO-C	5	5	2
LRPR2N-80HO-C	6	6	2

Construction Features:

- Heavy-duty stainless steel exterior with 300 series stainless steel interior and aluminized steel top
- Foam-insulated walls, ceiling and door
- Modular wall and ceiling panels with cam interlocks
- Tubular heaters; non-submerged to extend life
- Lighted interior
- Inner bumpers to protect interior walls and doors
- 208VAC or 240VAC 1- or 3-phase power, field convertible (Heating)
- Refrigeration components compatible with R448A refrigerant
- 208VAC 1-phase power (Cooling)

Performance Features:

- Dual purpose, provides both proofing and retarding
- Rapid responding air-wash heat and humidity system
- Proofing Temperature Range: 70-120 deg F
- Retarding Temperature Range: 34-45 deg F
- Humidity Range: 50-99%
- Evaporators sized for high humidity levels to prevent drying of product
- Refrigeration system sized for rapid pull-down
- PID-type controller design to ensure rapid and accurate response without overshoot

Control Features:

- Control is mounted in the door at eye-level
- Large LED displays for Time, Temperature, and Humidity

Options and Accessories:

- **Pre-charged refrigeration system**
- Rugged 300-series stainless steel floor
- 72610-48 Water Filtration System

Retarder Proofer — Two Door, Condenser Included

Series LRPR2N-HO-C

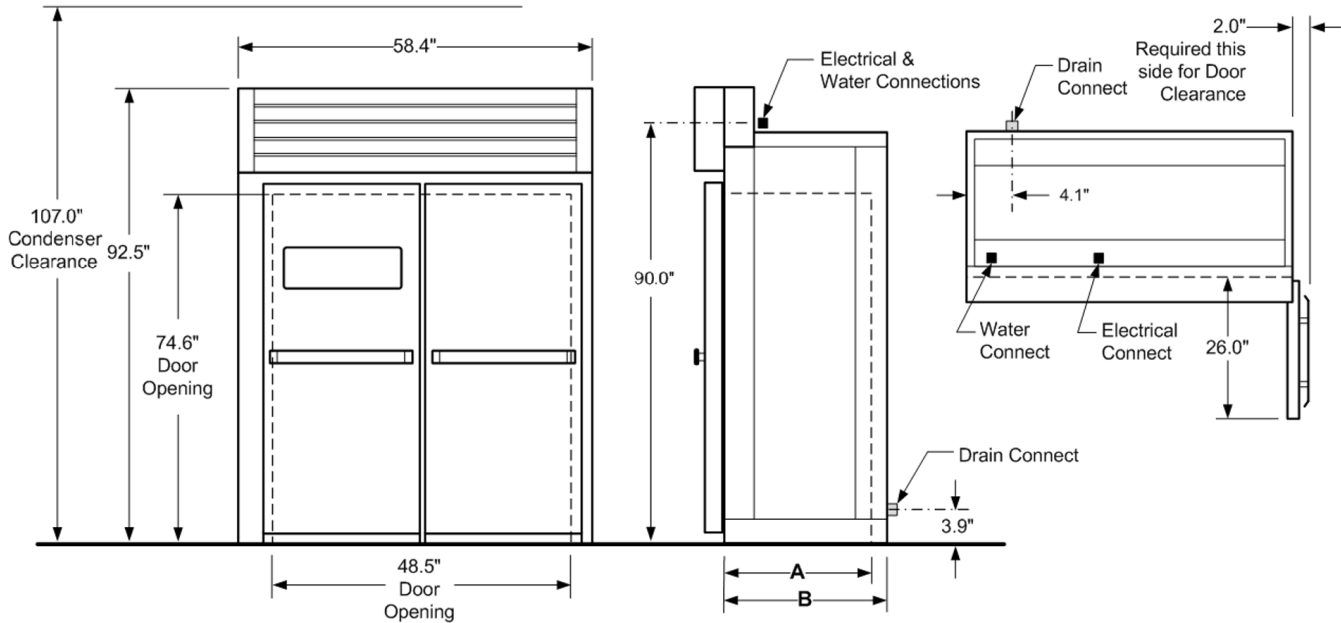
Installation Requirements:

- Factory authorized start-up required
- Ships knocked down. Requires on-site assembly
- Appliance is designed to operate at normal room temperatures
- Should not be installed within 4" of oven or other heat source to prevent heat transfer
- Clearance to combustibles is 0" sides and back
- Floor must be level to within 1/8" per foot. Difference for entire floor must not exceed 3/4"
- For installation on non-porous surfaces only

Note: Refrigeration system may require installation by a licensed refrigeration technician

Options and Accessories:

- Stainless Steel Floor 72610-48 Water Filtration Assembly Pre-Charged Refrigeration System



Utility Requirements:

Model	Cooling * 208VAC, 1 ph		Heating * (6.0 kW max) 208-240VAC			Retarder BTU @ 35 deg F
	MCA	MOP	MCA 1 ph	MCA 3 ph	MOP	
LRPR2N-30HO-C	7.4	15	35	20	50	4300
LRPR2N-40HO-C	7.4	15	35	20	50	4300
LRPR2N-50HO-C	7.4	15	35	20	50	5500
LRPR2N-60HO-C	7.4	15	35	20	50	5500
LRPR2N-70HO-C	9.7	20	35	20	50	6000
LRPR2N-80HO-C	9.7	20	35	20	50	6000

* 2 separate electrical supplies required

Dimensions:

Dim A (in)	Dim B (in)
29.0	31.0
39.0	41.0
49.0	51.0
59.0	61.0
69.9	71.0
79.0	81.0

Shipping Information:

Weight (lbs)		Freight Class
Actual	Shipping	
1100	1200	85
1157	1282	
1329	1454	
1411	1536	
1493	1518	
1665	1790	

Water Quality Requirements:

pH: 7.0-8.5
Total Hardness < 50 ppm
Chlorides < 50 ppm
Total Chlorine < 0.5 ppm
Iron < 0.3 ppm

Water	Drain
1/2" NPT, cold, filtered 0.07 gpm @ 60 psi	3/4" copper, Route to air gap drain